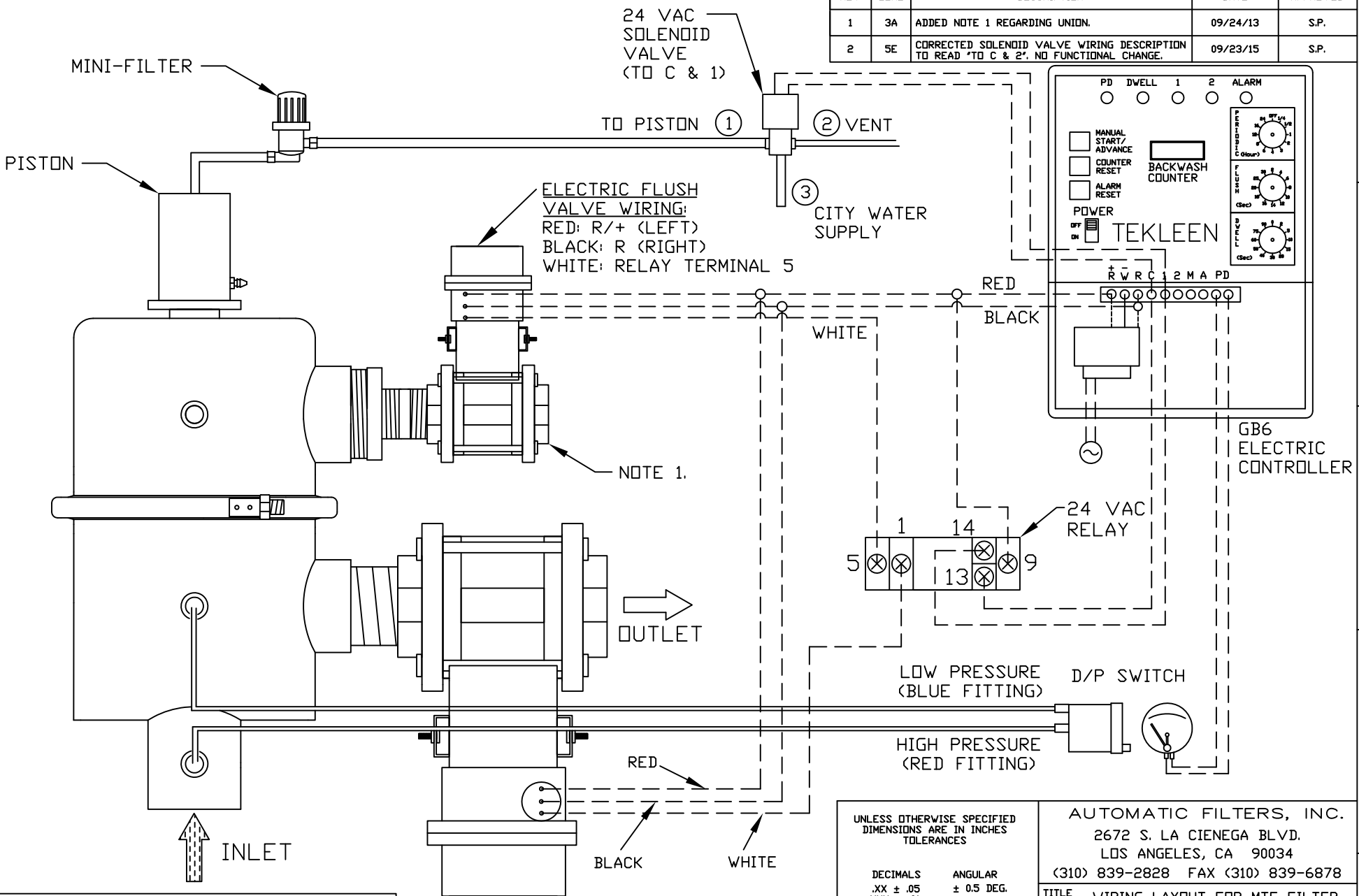


3	ALL	MOVED PSV TO RELAY TERMINAL 1. MOVED EFV TO TERMINAL 1. MOVED SOLENOID TO TERMINAL 1.	09/15/17	R.L.
---	-----	---	----------	------

REVISIONS				
REV	ZONE	DESCRIPTION	DATE	APPROVED
1	3A	ADDED NOTE 1 REGARDING UNION.	09/24/13	S.P.
2	5E	CORRECTED SOLENOID VALVE WIRING DESCRIPTION TO READ 'TO C & 2'. NO FUNCTIONAL CHANGE.	09/23/15	S.P.



○	JUNCTION
◐	NO JUNCTION
---	ELECTRICAL CONNECTION
====	HYDRAULIC CONNECTION

NOTES:  
1. IT IS RECOMMENDED THAT A UNION BE INSTALLED BETWEEN THE FLUSH VALVE AND FLUSH LINE FOR EASE OF MAINTENANCE.

UNLESS OTHERWISE SPECIFIED DIMENSIONS ARE IN INCHES TOLERANCES	
DECIMALS .XX ± .05 .XXX ± .01	ANGULAR ± 0.5 DEG.
DRAWN S. PERKINSON	DATE 03/19/13
CHECKED	SIZE A
DESIGN FOR:	DWG NO. WIRE-MTFGB6-EFV-PSV-LAY-02

AUTOMATIC FILTERS, INC. 2672 S. LA CIENEGA BLVD. LOS ANGELES, CA 90034 (310) 839-2828 FAX (310) 839-6878	
TITLE WIRING LAYOUT FOR MTF FILTER WITH GB6 CONTROLLER, ELECTRIC BALL FLUSH VALVE, SOLENOID VENT FOR PISTON, & ELECTRIC BALL PRESSURE SUSTAINING VALVE	
NOT TO SCALE	REV 2
SHEET 1 OF 1	